

Agilent ENA Series RF Network Analyzers

**Enables Auto-complete of ENA Series
Commands when Writing Code on an
External PC**

Third Edition



Agilent Technologies

No. 16000-95018

January 2006

Notices

The information contained in this document is subject to change without notice.

This document contains proprietary information that is protected by copyright. All rights are reserved. No part of this document may be photocopied, reproduced, or translated to another language without the prior written consent of Agilent Technologies.

Agilent Technologies Japan, Ltd.

1-3-2, Murotani, Nishi-ku, Kobe, Hyogo, 651-2241 Japan

MS-DOS®, Windows®, Windows 98, Windows NT®, Visual C++®, Visual Basic®, VBA, Excel and PowerPoint® are U.S. registered trademarks of Microsoft Corporation.

Portions ©Copyright 1996, Microsoft Corporation. All rights reserved.

© Copyright 2002, 2006 Agilent Technologies Japan, Ltd.

Sample Program

The customer shall have the personal, non-transferable rights to use, copy, or modify SAMPLE PROGRAMS in this manual for the customer's internal operations. The customer shall use the SAMPLE PROGRAMS solely and exclusively for their own purposes and shall not license, lease, market, or distribute the SAMPLE PROGRAMS or modification of any part thereof.

Agilent Technologies shall not be liable for the quality, performance, or behavior of the SAMPLE PROGRAMS. Agilent Technologies especially disclaims any responsibility for the operation of the SAMPLE PROGRAMS to be uninterrupted or error-free. The SAMPLE PROGRAMS are provided AS IS.

AGILENT TECHNOLOGIES DISCLAIMS ANY IMPLIED WARRANTY OF MERCHANTABILITY AND FITNESS FOR A PARTICULAR PURPOSE.

Agilent Technologies shall not be liable for any infringement of any patent, trademark, copyright, or other proprietary right by the SAMPLE PROGRAMS or their use. Agilent Technologies does not warrant that the SAMPLE PROGRAMS are free from infringements of such rights of third parties. However, Agilent Technologies will not knowingly infringe or deliver software that infringes the patent, trademark, copyright, or other proprietary right of a third party.

Enables auto-complete of ENA Series commands when writing code on an external PC

Overview of the E5062.tlb/E5070.tlb file

By referring to the "E5062.tlb/E5070.tlb" library, the auto complete function becomes available on the external PC. If you use the Microsoft Office applications (Microsoft PowerPoint® etc.), since they are equipped with VBA, you can complete most part of the application development within the Microsoft Office applications.

NOTE: The "E5062.tlb/E5070.tlb" library enables edit only. COM objects for the ENA/ENA-L can not be executed.

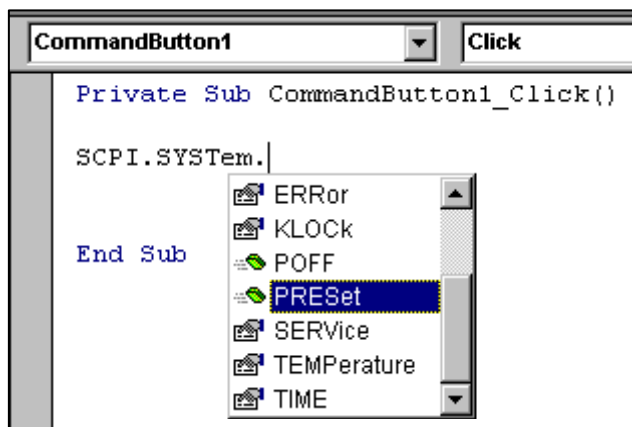


Figure 1. Auto-complete function

How to install the "E5062.tlb/E5070.tlb" library

- Step1.** Save the "E5062.tlb/E5070.tlb" to the hard disk drive of your PC (Anywhere is ok).
- Step2.** Display Visual Basic® editor or VBA editor on your PC.
- Step3.** From the **Tools** menu, choose **References**.
The **References** dialog box is displayed, as shown in Figure 2.
- Step4.** Choose the **Browse** button, and then select the "E5062.tlb/E5070.tlb"
- Step5.** Choose OK to add the selected references to your project.

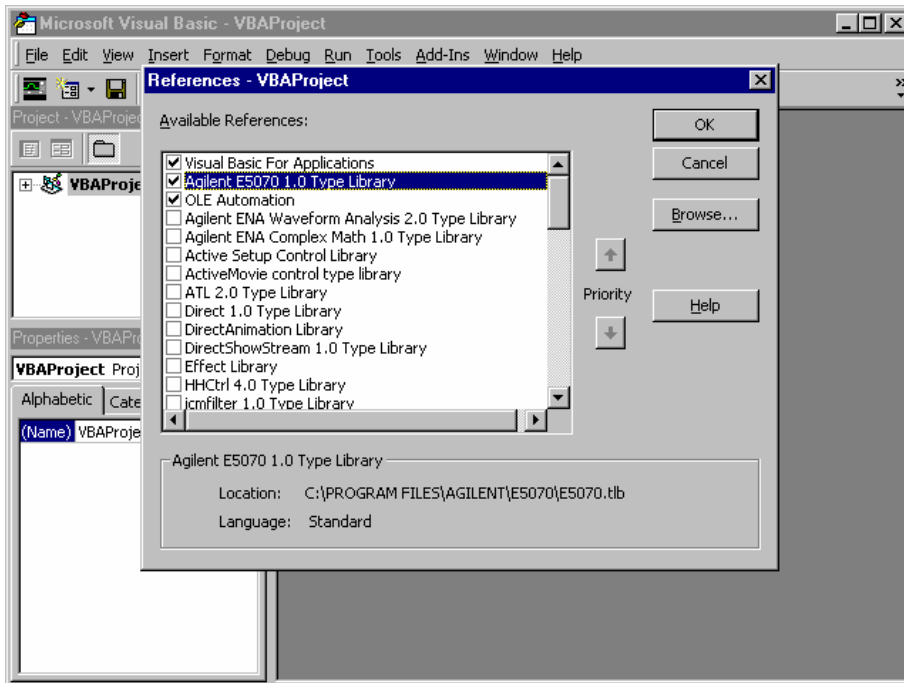


Figure 2. The References dialog box

NOTE: You have to use the appropriate revision of the "E5062.tlb/E5070.tlb" according to the ENA/ENA-L firmware revision.

How to import and export modules

After writing a program in Microsoft Visual Basic or Microsoft Office applications, export each module separately. You will be able to use them in the built-in VBA of the ENA/ENA-L after importing each module.

Step1. Write a VBA program on an external PC.

Step2. In Project Explorer, click the file name.

Step3. Click the right mouse button, and click **Export File....**

Step4. Save the module to floppy disk or the D drive of your ENA/ENA-L via LAN.

Step5. Display the VBA editor of the ENA/ENA-L.

Step6. In Project Explorer, right-click the "VBAProject" icon, and click **Import File....**

Step7. Load the module that you saved on the external PC.

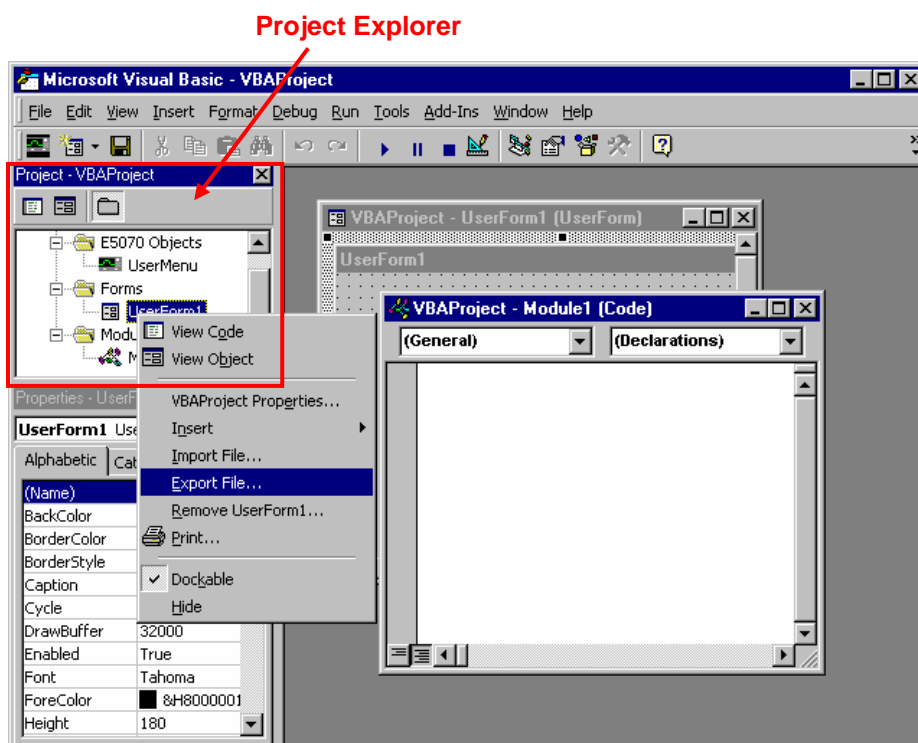


Figure 3. Import / export function

NOTE: In case an error message is displayed while you are trying to execute the VBA program, please check that all modules were imported and make sure the required library files are set on the ENA/ENA-L.